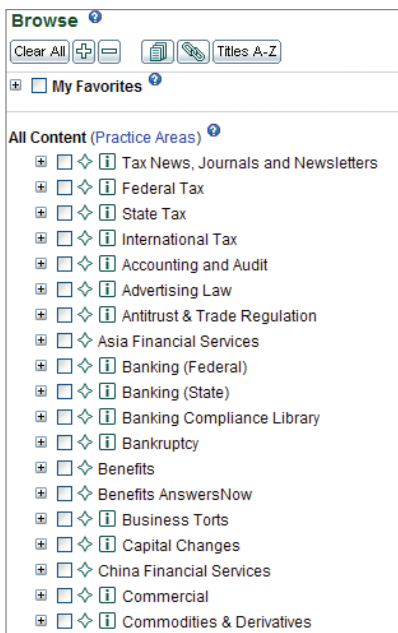
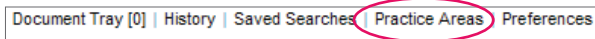


# Customizing Practice Areas

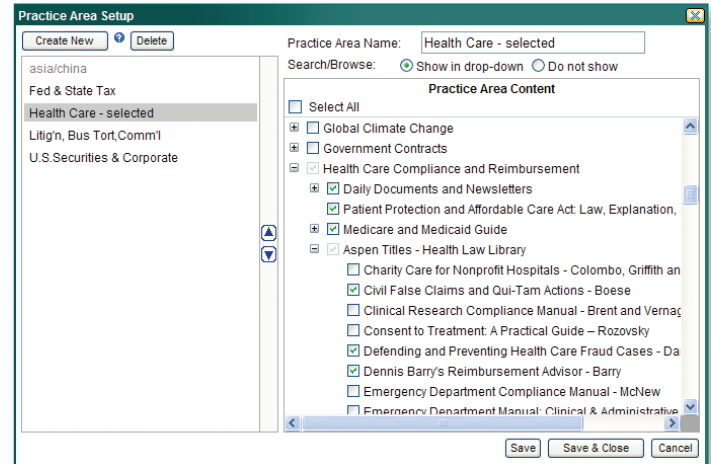
Your IntelliConnect subscription is displayed within the Browse Tree under content areas (or libraries). You can tailor the content available within the Browse Tree or included in your searches by creating up to 20 custom Practice Area profiles.

## To select or change your Practice Area(s):

1. Click **Practice Areas** on the Browse pane or on the **Menu Bar**.

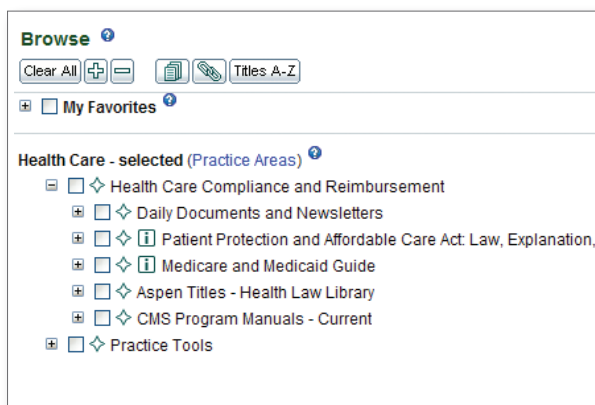


**BEFORE**  
changing  
practice areas



2. Click **Create New** and type in a name for your Practice Area profile.
3. Expand libraries and select desired content.  
**TIP:** Click "Select All" at top of listing to quickly select or deselect all items  
*Optional:*
  - Choose "Do not show" if you wish to hide the profile on the Search/Browse drop-down menu
  - Use the blue arrows to change the position of a profile
4. Click **Save & Close** to view your customized content in the Browse Tree.
5. The Search/Browse drop-down will now reflect the new Practice Area name and the Browse Tree contents will change accordingly.

**AFTER** changing practice areas



### Notes:

- Switch between Practice Area profiles by using the Search/Browse drop-down
- Browse Tree indicates the currently selected Practice Area profile
- My Favorites are independent of Practice Area
- Titles A-Z will gray out any titles that are outside your currently selected Practice Area
- Both Recent Searches (available within History) and Saved Searches will retain the Practice Area setting